

SERVICE & MAINTENANCE

Grimbergen - Service

With Grimbergen as your partner, you can be assured that the most efficient results of your production facility will be attained. Working safely and efficiently are both our and your key priorities. In order to ensure optimal performance of your production processes, and to maintain ongoing improvement, you need a proficient, trustworthy and flexible team in the field of service and maintenance. Based on your specific requirements and demands, we provide a tailor made service approach which exactly fits your needs. An effective plant maintenance program should offer guaranteed reliability and low maintenance costs that keeps the labour force focused on productivity, not repairs.

Spare Parts

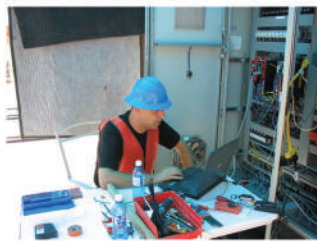
In order to obtain maximum machine tool up-time with reliable performance, emphasis on preventive measures can greatly reduce the risks of machine failure. Our extensive experience of analysing critical components within machinery makes Grimbergen your 'perfect' spare-partner'. We are capable of producing and delivering spare parts quickly, as well as advising which machine parts are critical. To minimize the loss of quality and the down-time of machinery, it is necessary to not only consider preventive and dynamic maintenance, but making sure that the right spare parts are available at the right moment.

Machine Adoption

Your company uses a variety of machinery from just as many different manufacturers. Therefore, it is possible that several different companies are providing service and maintenance. To reduce costs and time, Grimbergen can take the responsibility for all of your machinery. As you might say, Grimbergen 'adopts' the maintenance program for you. In addition to maintaining the equipment, we also revise and upgrade the machinery and/or its control system.

Quality

Operational success depends on the safety of your workforce and the quality of your products. This is why we constantly work on improving our own production processes and our products. Not only do our ISO-9001 and VCA++ certifications and the machine building standards reflect our quality policy, but also our growing list of references with companies that demand nothing but the highest quality of their equipment.



Our service and maintenance includes:

- 24/7 Direct support from our software-engineers.
- Field Service Engineers, E/M Engineers, Technical Supervisors.
- Rapid delivery of spare parts.
- Maintenance management & machine monitoring
- Guidance/organizing your maintenance management.
- On-site preventive maintenance, inspections, maintenance scans, repairs, fixing disturbances.
- Performing analyses (OEE/Maintenance ROI)
- Specific and thorough consult for maintenance, revision or replacement of (parts of) your machinery.
- Training your technical staff and operators.

STEEL

We offer a broad range of service and maintenance possibilities for steel processing industries. Not only do our services prove to be perfectly applicable for steel processing, but also for the **shipbuilding** and the **offshore** industry. At Grimbergen, we strive to make your machinery and systems as efficient and reliable as possible, while keeping them up-to-date. This to ensure the most optimal throughput within your production, handling and logistic processes..

PREFAB

In addition to steel processing industries, Grimbergen provides its services in the precast concrete industry as well. Decades of experience has made us an expert in production, handling and logistic processes for all kinds of **prefabricated concrete products**. Our expertise in **tensioning systems** used for producing pre-stressed concrete products makes us a pioneer in many of these products, such as the **railway sleepers**. Naturally our services are fully set up to get the most out of your machinery and systems, and to make sure your production processes are as efficient as possible.

About us

In 1945 the company was founded as a smith's working-place by Mr Henk Grimbergen. Rapidly the activities were extended by fulfilling the need for machinery and equipment in the surrounding industries. In the course of years Grimbergen evolved into an internationally operating player under the lead of the second generation Freek Grimbergen in the field of tailor-made machinery and overall solutions in the form of complete production systems for the heavy industry. Meanwhile the grandson of the founder (Henk-Jan) took over the lead, but still with the course focused on client specific machines and logistic systems and always faithful to the philosophy which was held high during the past 3 generations: come to the best possible solutions in close cooperation with the clients to realise an optimal production plant with continuous improvements.

Besides the history and the steady course, the greatest value of the company is the extraordinary motivated team of people with year-long experiences in all possible disciplines, guts and especially innovative capacities. Always with their focus on the best result for our clients.

"The Grimbergen Philosophy"

Why? Our clients continuously work on the production of new and improved products in the most safe, efficient and sustainable way possible.

How? For you as our client Grimbergen is your partner during the complete lifespan of your production facilities. In close cooperation with you we search and realise the best possible solutions for an optimal performance, but also for continuous improvements of your production systems.

What? Grimbergen designs, realises and installs innovative tailor-made machines and logistic systems and offers a full service and maintenance package on these systems.



Contactgegevens

H. J. Grimbergen b.v.
Bedrijfsweg 25, 2404 CB Alphen aan den Rijn
The Netherlands
T +31 (0) 172 43 27 21
F +31 (0) 172 44 42 21
Email:
info@grimbergen.nl
sales@grimbergen.nl

www.grimbergen.nl



Grimbergen
Industrial Systems

Your Constructive Partner in – Consult – Design – Realisation – Service